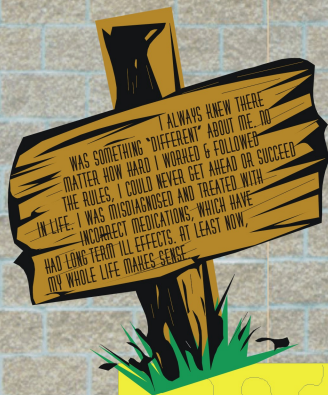




Timing is critical, especially for adults, to be properly diagnosed with an ASD. Being a disorder with a spectrum of symptoms and co-morbidities, doctors often fail to render proper diagnoses for other symptoms and underlying medical or behavioral issues if the primary ASD diagnosis is lacking. This can cause a life of suffering, maladjustment, even premature death for these undiagnosed adults.



A great many children growing up and going through the elementary school system prior to the 1990s, who might have had an ASD, were most likely missed, and "fell between the cracks" then and till this day. These children may have suffered silently, if high-functioning on the spectrum, or may have been institutionalized if lower-functioning. The ones in-between were likely labeled "problem children" with schizophrenia or some other mental health disorder and treated professionally for such and/or cared for by family, if capable of doing so.



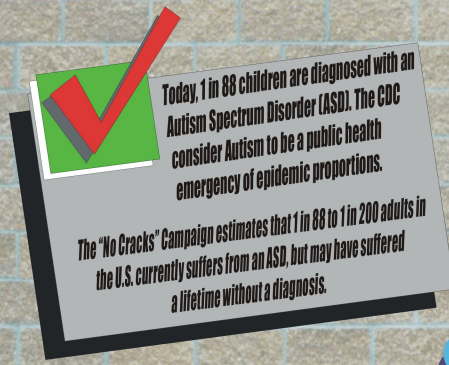
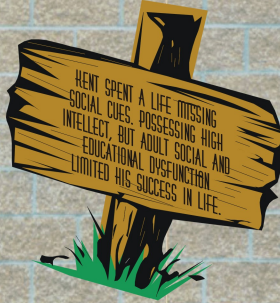
About 10% of autistic individuals have "savant skills," that is, exceedingly advanced abilities in calculation, memory, music or art. Autistic talent is a form of information processing. An ability for conscious pattern detection and an interest in making sense of complex data, simplifying it to have control over the environment. The autistic brain is conducive to success in math, computer programming, science and music; all disciplines that are built atop complex systems and patterns within them.



Diagnosed with Asperger's & Savant Syndromes at age 51



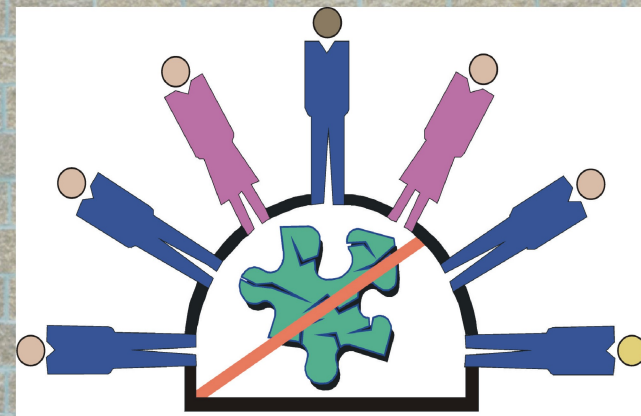
Diagnosed with Asperger's at age 59



<http://www.no-cracks.com>

"No Cracks" Campaign  
c/o Michele M. Newman  
860 W. Baseline Rd., #236  
Lafayette, CO 80026

ASDs are Neuro-developmental, and thus, has a biological foundation. The most current research indicates that most, if not all who develop an ASD may be genetically pre-disposed to the condition. It's our exposure to a highly toxic environment, on multiple levels, that triggers the dormant genes. ASD is a "spectrum" disorder, because any single or spectrum of toxins can trigger the ASD.



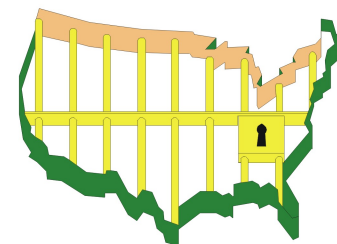
## "No Cracks" Campaign

A national campaign to develop an affordable and accessible system of services for the mass population of adults who live with the daily issues experienced by persons with an Autistic Spectrum Disorder (ASD).

### Our plan includes:

- ~ Providing & promoting simplified, diagnostic screening processes for adults who "fell through the cracks" and were never diagnosed with an Autism Spectrum Disorder (ASD) as a child;
- ~ Serve as a resource to develop and provide quality, educated sources of professional services for adults with ASD;
- ~ Establish an accountability system for currently diagnosed & yet to be diagnosed adults with ASD, in order to convince policymakers and professionals that mass numbers of adults on the spectrum exist, who require these benefits and services. (We hope to create the first voluntary, centralized, national database of persons, over the age of 17, professionally and self-diagnosed with an ASD.)

# THINK



Many individuals in penal institutions have one or more of the following behavioral attributes:

- ~ Aggressive behavior
- ~ Control issues
- ~ Social outcasts or inability to relate appropriately on a social level
- ~ Trust issues
- ~ Intellectual deficiencies due to educational shortcomings or for biological reasons
- ~ Poor self-esteem
- ~ Existing mental health issues/conditions

SUCH ATTRIBUTES COULD EASILY REPRESENT AN UNDERLYING, UNDIAGNOSED REPRESENTATION OF AN ASD



Diagnosed with Asperger's at age 86